

LP InduPlac

STRUCTURAL DECORATIVE

AN OSB DESIGNED TO BE USED IN INTERIOR DECORATION



- ✓ Great durability and diversity of uses.
- ✓ OSB technology, friendly with the environment.
- ✓ OSB boards calibrated and polished for decorative use.

www.LPChile.cl

Decorative Cladding

LP Induplac Native is produced with high performance technology by LP Building Products, worldwide leader in the manufacture of structural OSB panels.

LP Induplac Natural is a structural OSB panel for decoration uses, with flat and clear surfaces. It is made only for indoor uses and it is easy to warmish, cut and install.

Same as the structural OSB, LP Induplac Natural is made 100% with MDI resin.

The OSB texture has always drawn the attention of architects and interior designers who use it at sight as coverings of walls and ceilings. Induplac Natural nice looking together with its stability and its physical mechanical resistance will allow a better structure building and finishing for inside walls, stands, furniture, among others.

Main uses

- Structure and Doors.
- Furniture, Bookcases, Tables, Shelves.
- In parts and pieces of armchairs, beds, desktops, drawers, chests, among others.
- Construction of Stands.
- Interior finishing for home, commercial and Industrial partitions.
- Packaging

Format

LP InduPlac 1,22 X 2,44 m	
	Pallet (unid.)
OSB Induplac 6 mm	145
OSB Induplac 8 mm	110
OSB Induplac 9 mm	98
OSB Induplac 10 mm	84
OSB Induplac 11,1 mm	75
OSB Induplac 12 mm	70
OSB Induplac 15 mm	56
OSB Induplac 18 mm	47
OSB Induplac 34 mm	27

Benefits

- Flat and clear surfaces,
- Surface free of knots and cracks.
- Panel with a higher structural capacity than other reconstituted panels or particle ones (MDF or chip panels).
- It is made with strong MDI resin, more resistant to humidity than other panels based on urea resins.
- Enhance of the colors of the wood (flakes) when clear or dyed varnish are applied.
- It is easy to work with and quick to install,

Storage and transport

The panels must be stored under cover in clean and dry areas, spaced at least 10 cm from the floor, onto a flat surface, with at least 3 support shafts, to avoid deformations.

Take all necessary measures to avoid the panels to be chipped or splintered during transformation, and also avoid dropping or throwing them.

Considerations previous to installment

The change in the humidity content of the boards cause a variation of the size of them and the wood flakes (contraction and dilatation), therefore is mandatory to have the panel in a balanced humidity before its installations both at the structures and at panels.

According to normative "The wood and its derivate must have, in the moment of its use, the same content of humidity than the place where it will be installed".

Stabilization

We will understand by stabilization the process of equaling the humidity content of the panel with the humidity balance of the place where the board will be installed.

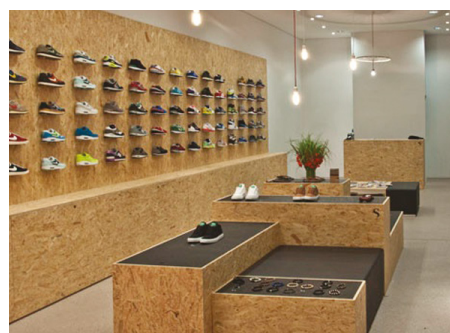
It is recommended to acclimatize this product in the place where it will be installed, be it castellated or leaning it outspread against the wall so that each panel can absorb the humidity of the environment completely.

Installation

This product can not be in direct contact with water once it will change the condition of its surface and will result in the corners swelling.

LP Induplac Natural panels, when used as finishing for partitions can be used directly onto the structure, either wood or metal, in the housing interior

It is mandatory that the surface to be covered is plumbed and aligned, since the finishing can copy all its imperfections. 3 mm dilatations must be left in all butt joints.



Fastenings

- LP Induplac Natural panels can be screwed or nailed directly to the structure.
- In the use of sowers, these must be 6 x 1,5/8" tip drill or fine point.
- In the use of nails, it is recommended to use 2.1/2" long.
- In the use for decoration drills can be used, though is recommended to glue the surface that will be in touch with the structure.
- Screw or nail the panels 1 cm from the edge, each 15 cm along the perimeter, and each 30 cm over interior supports.
- We recommend a good quality fastening, thus its use will avoid the appearance of spots and rust.

Edge sealing and drilling

When cutting the panels, remove the excesses by sanding the edges for get a better finishing.

The cuts and perforations on the panels must be sealed with varnish to avoid the penetration of humidity, unless the exposed edges are connected with other surfaces in a way it let closed or sealed.

Finishing

Before starting to varnish, make sure that the finishing surface is clean, without sawdust or dirt, typical of construction sites.

The LP Induplac Natural products can be varnished with marine or polyurethane varnish.

The use of LP Induplac Natural is not recommended for outdoor uses.

They must not be painted or wallpapered once the wood tannins will emerge and stain the finishing. Besides, the excess of humidity in these ends will result in changes in the flatness of the surface, reflecting the OSB texture (flakes), which does not assure a proper finishing.

